



### 产品特性 Product features

- 滑动层标准材料TEFPLAS<sup>™</sup>B  
可选材料TEFPLAS<sup>™</sup>G、TEFPLAS<sup>™</sup>E
- 外壳材料铝合金，可选不锈钢
- 自润滑，免维护
- 运行平稳，无噪音
- 高速运行，长寿命
- 工作温度 ± 200 °C
- Standard material of sliding layer: TEFPLAS<sup>™</sup>B  
Available materials: TEFPLAS<sup>™</sup>G、TEFPLAS<sup>™</sup>E
- Shell made of aluminum, available stainless steel
- Self-lubricating, maintenance-free
- Smooth operation, no noise
- High-speed operation and long life
- Operation temperature ± 200 °C

### TEFPLAS<sup>™</sup> 滑动层材料 Sliding layer materials

TEFPLAS<sup>™</sup>B 是标准滑动层材料，综合高承载与耐磨特性，适用于硬度HRC35以上硬轴。

TEFPLAS<sup>™</sup>G 极好的耐磨性能，适用于硬轴、不锈钢轴或铝轴。

TEFPLAS<sup>™</sup>E 符合FDA食品接触安全材料，适用于不锈钢轴或铝轴。

TEFPLAS<sup>™</sup>B is a standard sliding layer material. It combines high load bearing and wear resistance performance, suitable for hard shaft HRC35 or higher.

TEFPLAS<sup>™</sup>G has excellent wear resistance, suitable for hard shaft, stainless steel shaft or aluminum shaft.

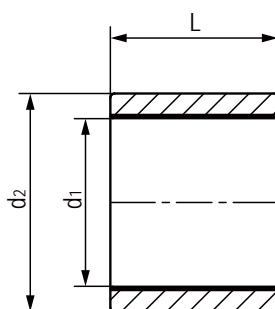
TEFPLAS<sup>™</sup>E FDA food contact safety materials, suitable for stainless steel shaft or aluminum shaft.

材料 Material	摩擦系数 Dry friction coefficient	最大静载荷 Max. static load MPa	最大动载荷 Max. dynamic load MPa	极限PV值 Max. PV N/mm <sup>2</sup> x m/s	最高干运行速度 (m/s) Max. Speed, Dry running		运行温度* Operation temperature °C
					连续运行 Continuous	间断运行 Intermittent	
TEFPLAS <sup>™</sup> B	0.10-0.25	20	10	0.7	1.5	4.0	± 200
TEFPLAS <sup>™</sup> G	0.10-0.20	16	8	0.6	1.0	3.0	± 200
TEFPLAS <sup>™</sup> E	0.05-0.18	12	6	0.4	1.0	2.0	± 200

\*极端高温下运行需要考虑加大配合间隙消除轴与轴承高温膨胀引起的卡滞现象，请与CSB销售工程师联系

\*For operation under extreme high temperature, it is necessary to consider increasing the fitting clearance to avoid stagnation caused by the high temperature expansion of the shaft and bearing. Please contact CSB sales engineers

## 直套 Metric cylindrical bushings



产品编码 Part No.:

ALBB-0812-08

高度 Length

外径 Outside diameter

内径 Inner diameter

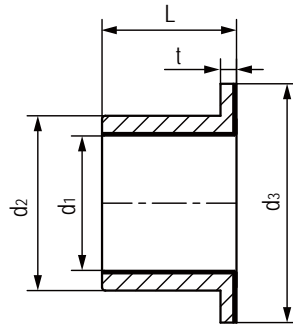
材料 Material: TEFPLAS™ B

座孔 Housing: H7 轴 Shaft: h6-h9

产品编码 Part No.	d <sub>1</sub> [mm]	公差 Tolerance [mm]	d <sub>2 (S7)</sub> [mm]	L <sub>(H13)</sub> [mm]
ALBB-0812-08	8	+0.033/+0.066	12	8
ALBB-0812-10	8	+0.033/+0.066	12	10
ALBB-0812-12	8	+0.033/+0.066	12	12
ALBB-0814-08	8	+0.033/+0.066	14	8
ALBB-0814-10	8	+0.033/+0.066	14	10
ALBB-1014-08	10	+0.033/+0.066	14	8
ALBB-1014-10	10	+0.033/+0.066	14	10
ALBB-1014-12	10	+0.033/+0.066	14	12
ALBB-1016-08	10	+0.033/+0.066	16	8
ALBB-1016-10	10	+0.033/+0.066	16	10
ALBB-1216-10	12	+0.034/+0.070	16	10
ALBB-1216-15	12	+0.034/+0.070	16	15
ALBB-1216-20	12	+0.034/+0.070	16	20
ALBB-1218-08	12	+0.034/+0.070	18	8
ALBB-1218-10	12	+0.034/+0.070	18	10
ALBB-1218-12	12	+0.034/+0.070	18	12
ALBB-1218-15	12	+0.034/+0.070	18	15
ALBB-1218-20	12	+0.034/+0.070	18	20
ALBB-1620-12	16	+0.041/+0.080	20	12
ALBB-1620-15	16	+0.041/+0.080	20	15
ALBB-1620-20	16	+0.041/+0.080	20	20

产品编码 Part No.	d <sub>1</sub> [mm]	公差 Tolerance [mm]	d <sub>2 (S7)</sub> [mm]	L <sub>(H13)</sub> [mm]
ALBB-1620-25	16	+0.041/+0.080	20	25
ALBB-1622-12	16	+0.041/+0.080	22	12
ALBB-1622-15	16	+0.041/+0.080	22	15
ALBB-1622-20	16	+0.041/+0.080	22	20
ALBB-1622-25	16	+0.041/+0.080	22	25
ALBB-2025-15	20	+0.042/+0.084	25	15
ALBB-2025-20	20	+0.042/+0.084	25	20
ALBB-2025-25	20	+0.042/+0.084	25	25
ALBB-2026-15	20	+0.042/+0.084	26	15
ALBB-2026-20	20	+0.042/+0.084	26	20
ALBB-2026-25	20	+0.042/+0.084	26	25
ALBB-2026-30	20	+0.042/+0.084	26	30
ALBB-2530-20	25	+0.050/+0.096	30	20
ALBB-2530-25	25	+0.050/+0.096	30	25
ALBB-2530-30	25	+0.050/+0.096	30	30
ALBB-2532-20	25	+0.050/+0.096	32	20
ALBB-2532-25	25	+0.050/+0.096	32	25
ALBB-2532-30	25	+0.050/+0.096	32	30
ALBB-3038-20	30	+0.050/+0.096	38	20
ALBB-3038-30	30	+0.050/+0.096	38	30
ALBB-3038-40	30	+0.050/+0.096	38	40

### 法兰轴承 Metric flange bushings



产品编码 Part No.:

ALBBF-0812-08

高度 Length

外径 Outside diameter

内径 Inner diameter

法兰设计 Flange design

材料 Material: TEFLAS™ B

座孔 Housing: H7 轴 Shaft: h6-h9

产品编码 Part No.	d <sub>1</sub> [mm]	公差 Tolerance [mm]	d <sub>2(s7)</sub> [mm]	d <sub>3(h13)</sub> [mm]	L <sub>(h13)</sub> [mm]	t <sub>(h13)</sub> [mm]
ALBBF-0812-08	8	+0.033/+0.066	12	16	8	2
ALBBF-0812-10	8	+0.033/+0.066	12	16	10	2
ALBBF-0812-12	8	+0.033/+0.066	12	16	12	2
ALBBF-0814-08	8	+0.033/+0.066	14	18	8	3
ALBBF-0814-10	8	+0.033/+0.066	14	18	10	3
ALBBF-1014-08	10	+0.033/+0.066	14	19	8	2
ALBBF-1014-10	10	+0.033/+0.066	14	19	10	2
ALBBF-1014-12	10	+0.033/+0.066	14	19	12	2
ALBBF-1016-08	10	+0.033/+0.066	16	22	8	3
ALBBF-1016-10	10	+0.033/+0.066	16	22	10	3
ALBBF-1216-10	12	+0.034/+0.070	16	22	10	2
ALBBF-1216-15	12	+0.034/+0.070	16	22	15	2
ALBBF-1216-20	12	+0.034/+0.070	16	22	20	2
ALBBF-1218-08	12	+0.034/+0.070	18	24	8	3
ALBBF-1218-10	12	+0.034/+0.070	18	22	10	3
ALBBF-1218-12	12	+0.034/+0.070	18	24	12	3
ALBBF-1218-15	12	+0.034/+0.070	18	22	15	3
ALBBF-1218-20	12	+0.034/+0.070	18	22	20	3

产品编码 Part No.	d <sub>1</sub> [mm]	公差 Tolerance [mm]	d <sub>2(s7)</sub> [mm]	d <sub>3(h13)</sub> [mm]	L <sub>(h13)</sub> [mm]	t <sub>(h13)</sub> [mm]
ALBBF-1620-12	16	+0.041/+0.080	20	27	12	3
ALBBF-1620-15	16	+0.041/+0.080	20	27	15	3
ALBBF-1620-20	16	+0.041/+0.080	20	27	20	3
ALBBF-1620-25	16	+0.041/+0.080	20	27	25	3
ALBBF-1622-12	16	+0.041/+0.080	22	28	12	3
ALBBF-1622-15	16	+0.041/+0.080	22	28	15	3
ALBBF-1622-20	16	+0.041/+0.080	22	28	20	3
ALBBF-1622-25	16	+0.041/+0.080	22	28	25	3
ALBBF-2026-15	20	+0.042/+0.084	26	32	15	3
ALBBF-2026-20	20	+0.042/+0.084	26	32	20	3
ALBBF-2026-25	20	+0.042/+0.084	26	32	25	3
ALBBF-2026-30	20	+0.042/+0.084	26	32	30	3
ALBBF-2532-20	25	+0.050/+0.096	32	38	20	3
ALBBF-2532-25	25	+0.050/+0.096	32	38	25	3
ALBBF-2532-30	25	+0.050/+0.096	32	38	30	3
ALBBF-3038-20	30	+0.050/+0.096	38	44	20	3
ALBBF-3038-30	30	+0.050/+0.096	38	44	30	3
ALBBF-3038-40	30	+0.050/+0.096	38	44	40	3