

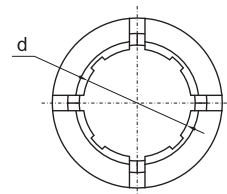
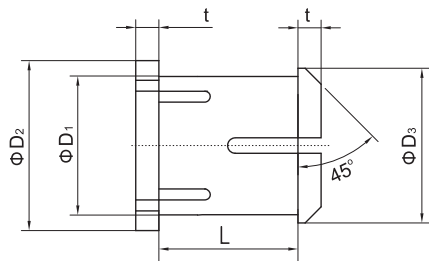
### ELB弹性直线轴承 Elastic linear bearings



### 产品特性 Product features

- 特殊设计直线运动轴承。同样适用于粉尘或经常需要清洗的环境中。安装极为简易，直接通过轴承自身限位固定。轴承的弹性允许安装孔和配合轴尺寸偏差。
- 自润滑，高耐磨
- 高排屑能力，易清洗
- 低摩擦系数
- 低成本，易安装
- Special designed linear bearing. It is suitable for the dusty environment. The mounting of the bearing is simple and easy. No additional location ring is needed. The elastic feature of the bearing can adjust the deviated mounting holes or shaft tolerance.
- Maintenance-free, high wear resistance
- Very suitable for long-time working in dusty
- Low friction coefficient
- Low cost, easy to install

### 标准规格 Standard specifications

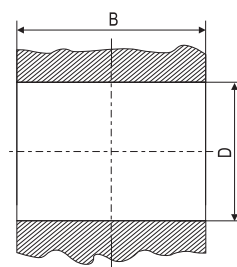


座孔 Housing: H7 轴 Shaft: h6-h9

产品编码 Part No.	d [mm]	d公差 Tolerance [mm]	D <sub>1</sub> [mm]	L [mm]	D <sub>2</sub> [mm]	D <sub>3</sub> [mm]	t [mm]	重量 Weight [g]
ELB-0610-10	6	+0.020/+0.068	10	10	12	11	1.5	0.9
ELB-0610-15	6	+0.020/+0.068	10	15	12	11	1.5	1.2
ELB-0812-10	8	+0.025/+0.083	12	10	14	13	1.5	1.2
ELB-0812-15	8	+0.025/+0.083	12	15	14	13	1.5	1.6
ELB-1014-10	10	+0.025/+0.083	14	10	18	16	2	1.7
ELB-1014-15	10	+0.025/+0.083	14	15	18	16	2	2.1
ELB-1216-15	12	+0.032/+0.102	16	15	20	18	2	2.5
ELB-1216-20	12	+0.032/+0.102	16	20	20	18	2	3.1
ELB-1418-15	14	+0.032/+0.102	18	15	22	20	2	2.8
ELB-1418-18	14	+0.032/+0.102	18	18	22	20	2	3.0

产品编码 Part No.	d [mm]	d公差 Tolerance [mm]	D <sub>1</sub> [mm]	L [mm]	D <sub>2</sub> [mm]	D <sub>3</sub> [mm]	t [mm]	重量 Weight [g]
ELB-1418-20	14	+0.032/+0.102	18	20	22	20	2	3.4
ELB-1519-20	15	+0.032/+0.102	19	20	23	21	2	3.5
ELB-1519-25	15	+0.032/+0.102	19	25	23	21	2	4.1
ELB-1620-20	16	+0.032/+0.102	20	20	24	22	3	4.2
ELB-1620-25	16	+0.032/+0.102	20	25	24	22	3	4.9
ELB-1822-20	18	+0.032/+0.102	22	20	26	24	3	4.8
ELB-1822-25	18	+0.032/+0.102	22	25	26	24	3	5.5
ELB-2024-25	20	+0.040/+0.124	24	25	28	26	3	5.5
ELB-2025-20	20	+0.040/+0.124	25	20	29	27	3	6.5
ELB-2025-30	20	+0.040/+0.124	25	30	29	27	3	8.5
ELB-2529-30	25	+0.040/+0.124	29	30	33	31	3	8.0
ELB-2530-30	25	+0.040/+0.124	30	30	34	32	3	10.8
ELB-2530-40	25	+0.040/+0.124	30	40	34	32	3	13.5
ELB-3034-30	30	+0.040/+0.124	34	30	38	36	3	9.5
ELB-3035-30	30	+0.040/+0.124	35	30	39	37	3	12.8
ELB-3035-40	30	+0.040/+0.124	35	40	39	37	3	15.9

## 装配尺寸 Installation size



产品编码 Part No.:

ELB-1418-16

轴承长度 Length  
 轴承外径 Outer diameter  
 轴承内径 Inner diameter

座孔 Housing: H7 轴 Shaft: h6-h9

产品编码 Part No.	轴径 Shaft h6-h9 [mm]	公差 Tolerance [mm]	D H7 [mm]	公差 Tolerance [mm]	B h10 [mm]	公差 Tolerance [mm]
ELB-0610-10	6	0/-0.030	10	0/+0.015	10	0/-0.058
ELB-0610-15	6	0/-0.030	10	0/+0.015	15	0/-0.058
ELB-0812-10	8	0/-0.036	12	0/+0.018	10	0/-0.070
ELB-0812-15	8	0/-0.036	12	0/+0.018	15	0/-0.070
ELB-1014-10	10	0/-0.036	14	0/+0.018	10	0/-0.070
ELB-1014-15	10	0/-0.036	14	0/+0.018	15	0/-0.070
ELB-1216-15	12	0/-0.043	16	0/+0.018	15	0/-0.070

产品编码 Part No.	轴径 Shaft h6-h9 [mm]	公差 Tolerance [mm]	D H7 [mm]	公差 Tolerance [mm]	B h10 [mm]	公差 Tolerance [mm]
ELB-1216-20	12	0/-0.043	16	0/+0.018	20	0/-0.084
ELB-1418-15	14	0/-0.043	18	0/+0.018	15	0/-0.070
ELB-1418-20	14	0/-0.043	18	0/+0.018	20	0/-0.084
ELB-1418-18	14	0/-0.043	18	0/+0.018	18	0/-0.070
ELB-1519-20	15	0/-0.043	19	0/+0.021	20	0/-0.084
ELB-1519-25	15	0/-0.043	19	0/+0.021	25	0/-0.084
ELB-1620-20	16	0/-0.043	20	0/+0.021	20	0/-0.084
ELB-1620-25	16	0/-0.043	20	0/+0.021	25	0/-0.084
ELB-1822-20	18	0/-0.043	22	0/+0.021	20	0/-0.084
ELB-1822-25	18	0/-0.043	22	0/+0.021	25	0/-0.084
ELB-2024-25	20	0/-0.052	24	0/+0.021	25	0/-0.084
ELB-2025-20	20	0/-0.052	25	0/+0.021	20	0/-0.084
ELB-2025-30	20	0/-0.052	25	0/+0.021	30	0/-0.084
ELB-2529-30	25	0/-0.052	29	0/+0.021	30	0/-0.084
ELB-2530-30	25	0/-0.052	30	0/+0.021	30	0/-0.084
ELB-2530-40	25	0/-0.052	30	0/+0.021	40	0/-0.100
ELB-3034-30	30	0/-0.052	34	0/+0.025	30	0/-0.084
ELB-3035-30	30	0/-0.052	35	0/+0.025	30	0/-0.084
ELB-3035-40	30	0/-0.052	35	0/+0.025	40	0/-0.100

### ELB弹性直线轴承安装方式 Elastic linear bearings installation method

