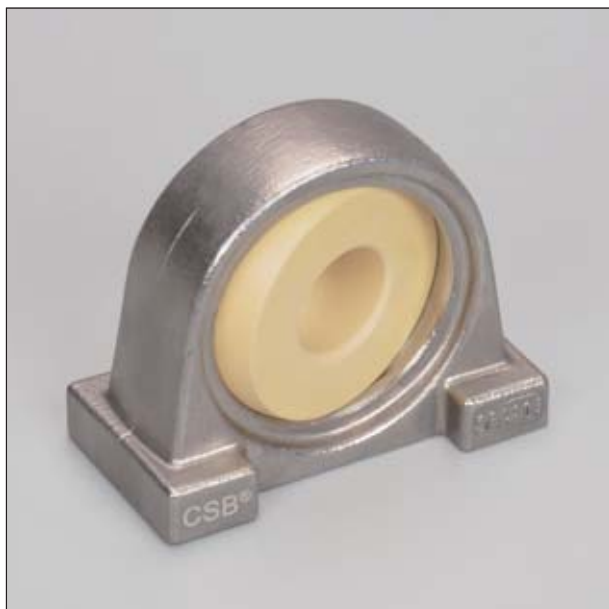


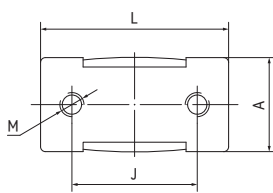
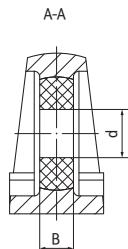
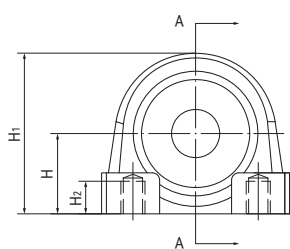
## SPA关节轴承座 Spherical bearing housings



### 产品特性 Product features

- 从UC204到UC208
  - 标准耐磨材料EPB13球体  
可选: FDA等级球体EPB6、高温250°C球体EPB10
  - 不锈钢基座带有2个固定孔
  - 自润滑免维护
  - 高负载
  - 耐脏污
- UC204 up to UC208
  - Standard anti-wear composite EPB13 balls  
available FDA grade material EPB6 or 250°C material EPB10
  - Stainless steel housing with 2 mounting holes
  - Maintenance-free dry operation
  - High load
  - Resistant to dirt

### 标准规格 Standard specifications



产品编码 Part No.:

SPA204-20-17-EPB13

材料 Material

宽度 Width

内径 Inner diameter

产品编码 Part No.	d [mm]	d公差 Tolerance [mm]	B <sub>+0.1</sub> [mm]	A [mm]	M [mm]	H [mm]	H <sub>1</sub> [mm]	H <sub>2</sub> [mm]	J [mm]	L [mm]	最大静态径向 抗压强度 Max. radial static compressive strength [KN]	最大静态轴向 抗拉强度 Max. axial static tensile strength [KN]	最大调 节角度 Max. pivot angle	重量 Weight [g]
SPA204-20-17-EPB13	20	+0.040/+0.124	17	35	M10x1.5	30.2	60	11	52	72	11.5	7.5	19°	134
SPA205-25-17-EPB13	25	+0.040/+0.124	17	37	M10x1.5	36.5	71	12	56	79	14.5	7.5	15°	529
SPA206-30-19-EPB13	30	+0.040/+0.124	19	44	M14x2	42.9	82	13	66	89	19.5	9.5	15°	642
SPA207-35-20-EPB13	35	+0.050/+0.150	20	48	M14	47.6	95	20	80	110	24.0	10.5	16°	850
SPA208-40-21-EPB13	40	+0.050/+0.150	21	54	M14	49.2	100	20	84	116	29.0	12.0	15°	1000